

ORGENTEC Diagnostika GmbH

Carl-Zeiss-Straße 49-51

55129 Mainz - Germany

Phone: +49 (0) 61 31 / 92 58-0

Fax: +49 (0) 61 31 / 92 58-58

Internet: www.orgentec.com



Electronic Instruction For Use: version

282_1

ORG 282 Stool Extraction Tubes

NAME AND INTENDED USE

Stool Extraction Tubes are an accessory for the extraction of stool samples to be used for analysis with ORGENTEC stool assays (ORG 280, ORG 284, ORG 286, ORG 580).

Intended for professional laboratory use only.

SYMBOLS USED ON LABELS

	Manufacturer		Temperature limitation
	Catalogue number		Consult instructions for use
	Sufficient for		Do not reuse
	Batch code		Electronic Instruction For Use: version

CONTENT

- 100 ORG 282 Sufficient for 100 applications
Unit contains 100 pieces of Stool Extraction Tubes packaged in two parts:
part A: 100 empty transparent tubes
part B: 100 orange dosing spatulas with blue cone insert

WARNINGS AND PRECAUTIONS

- Handle stool specimens as potentially infectious material.
- Dispose of used extraction tubes as potentially infectious waste. Do not reuse.
- Dispose of unused extraction tubes as plastic waste.

STORAGE AND STABILITY

- Store at room temperature 10-30 °C.

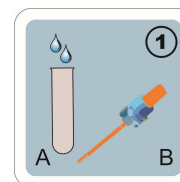
MATERIALS REQUIRED FOR EXTRACTION

- Use Extraction medium from the respective ORGENTEC stool assay, e.g. F5126 Stool Extraction Medium. F5126 is also available separately.
- Vortex mixer

PREPARATION OF STOOL SAMPLES

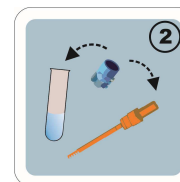
Read Instruction for Use of the respective ORGENTEC stool assay kit.

EXTRACTION PROCEDURE



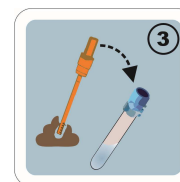
1 Prepare tube

Fill Extraction Medium into the transparent tube (part A). Volume is stated in the Instruction for Use of the respective ORGENTEC stool assay.



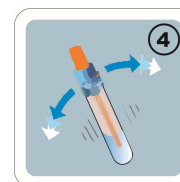
2 Separate spatula

Remove the orange dosing spatula from the blue cone insert (part B). Screw the blue cone insert onto the tube (part A).



3 Pick stool sample

Remove the stool sample by picking the orange dosing spatula into the stool. The notches of the spatula need to be fully covered with stool sample. This results in picking 15 mg of stool. Slip tip of orange dosing spatula on paper to remove excess stool. Press the orange dosing spatula into the blue cone insert of the tube. The surplus stool is wiped off by the cone insert.



4 Extraction

Mix well or vortex to remove stool sample from the notches of the spatula. Incubate and proceed further according to the Instruction for Use of the respective ORGENTEC stool assay.

Important Reminders

- The stool samples must be used at room temperature.
- Inhomogeneous samples should be homogenized prior to sampling, e.g. by using an inoculation loop.
- We recommend: weigh out liquid stool samples (15 mg).
- We recommend: analyze the extracted stool sample immediately or store according to the Instruction for Use of the respective ORGENTEC stool assay.

Change Control
Former version: ---

Reason for revision: *Separate IFU; Introduction e-IFU on homepage*